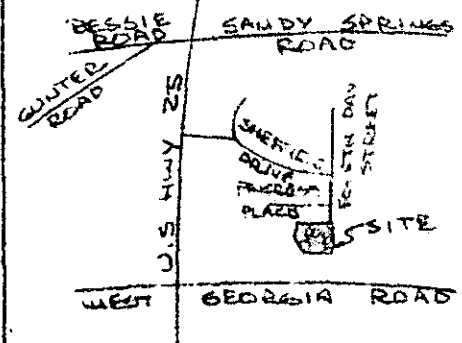


THIS PLAT IS NOT A SUBDIVISION AS DEFINED BY THE GREENVILLE COUNTY SUBDIVISION REGULATIONS.

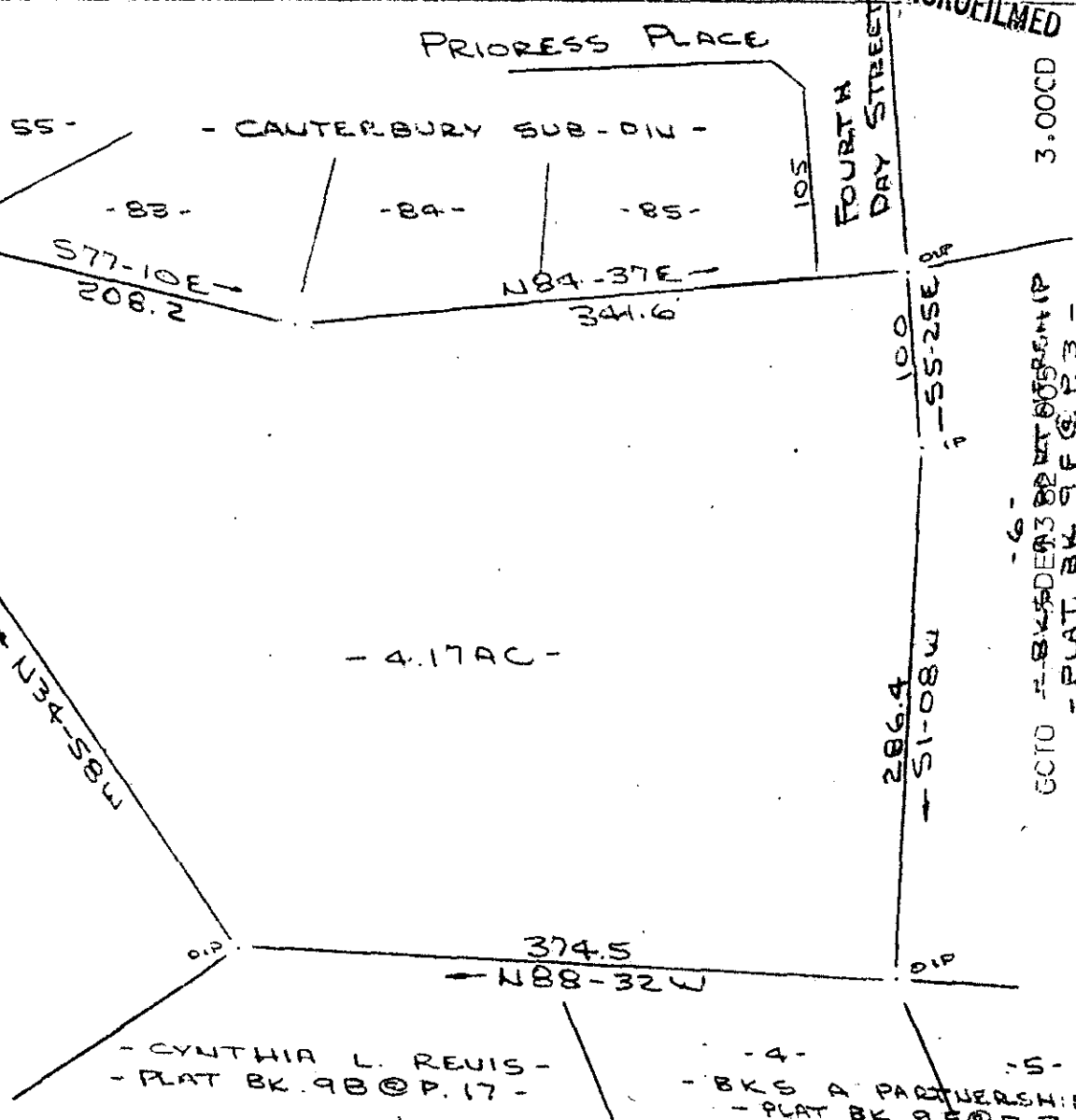
12/13/82

F. J. Feltus
 Chairman, Secretary, or Director of Planning.
 Greenville County Planning Commission

BETH & HANCY REEVES -



LOCATION MAP TO SCALE



SURVEY FOR
 B. K. S. A. PARTNERSHIP
 GREENVILLE COUNTY S.C.
 SCALE: 1"=100' 14 SEPT 1982
 REV 7 DEC 1982



DEC 13 1982

I Certify That The Ratio Of Precision Of The Field Survey Is 1/5000 As Shown Hereon And That The Area Determined By D.M.D. Method Of Area Calculations.

14322

9-I-97 ✓

R. B. [Signature]

CAROLINA SURVEYING CO
 112 MANLY ST.
 GREENVILLE, S.C.



FILED
 CO. S. C.
 DEC 13 10 21 AM '82
 DONNIE TANKERSLEY
 REC'D

MICROFILMED
 3.0000
 GCTO - BK 5 DE 13 82 PLAT 005 82 (P)
 - PLAT BK 98 @ P. 17 -